

AIR COOLED

Single Stage, Oil Flooded

VYAAN Model	Compressor Speed	Pressure Variant	Max. Operating Pressure		* Actual Delivery		Air Receiver Volume / Mounting	Rated Motor Power		Air Connection	# Weight
			bar	psig	m ³ /min	cfm		kW	HP		
VSA-5	4000	7	7	102	0.54	19	250	3.7	5	G 1/2"	190
	3700	8	8	116	0.48	17	250	3.7	5	G 1/2"	190
	3100	10	10	145	0.40	14	250	3.7	5	G 1/2"	190
	2800	11	11	160	0.34	12	250	3.7	5	G 1/2"	190
VSA-7.5	5200	7	7	102	0.91	32	250	5.6	7.5	G 1/2"	245
	4800	8	8	116	0.82	29	250	5.6	7.5	G 1/2"	245
	4400	10	10	145	0.71	25	250	5.6	7.5	G 1/2"	245
	3750	13	13	189	0.54	19	250	5.6	7.5	G 1/2"	245
VSA-10	7000	7	7	102	1.22	43	300	7.5	10	G 1/2"	260
	6600	8	8	116	1.13	40	300	7.5	10	G 1/2"	260
	6300	10	10	145	0.99	35	300	7.5	10	G 1/2"	260
	6000	13	13	189	0.85	30	300	7.5	10	G 1/2"	260
VSA-15	5750	7	7	102	1.84	65	500	11	15	G 3/4"	425
	5400	8	8	116	1.64	58	500	11	15	G 3/4"	425
	4900	10	10	145	1.47	52	500	11	15	G 3/4"	425
	4250	13	13	189	1.19	42	500	11	15	G 3/4"	425
VSA-20	7600	7	7	102	2.32	82	500	15	20	G 3/4"	445
	7250	8	8	116	2.21	78	500	15	20	G 3/4"	445
	6600	10	10	145	2.01	71	500	15	20	G 3/4"	445
	5750	13	13	189	1.76	62	500	15	20	G 3/4"	445
VSA-25	4000	7	7	102	3.40	120	750	19	25	G 1"	675
	3750	8	8	116	3.09	109	750	19	25	G 1"	675
	3300	10	10	145	2.72	96	750	19	25	G 1"	675
	2850	13	13	189	2.41	85	750	19	25	G 1"	675
VSA-30	4600	7	7	102	3.82	135	750	22	30	G 1-1/2"	710
	4300	8	8	116	3.60	127	750	22	30	G 1-1/2"	710
	3900	10	10	145	3.26	115	750	22	30	G 1-1/2"	710
	3400	13	13	189	2.83	100	750	22	30	G 1-1/2"	710
VSA-40	6000	7	7	102	4.96	175	SKID	30	40	G 1-1/2"	475
	5700	8	8	116	4.67	165	SKID	30	40	G 1-1/2"	475
	5200	10	10	145	4.39	155	SKID	30	40	G 1-1/2"	475
	4600	13	13	189	3.82	135	SKID	30	40	G 1-1/2"	475
VSA-50	4400	7	7	102	5.81	205	SKID	37	50	G 2"	540
	4100	8	8	116	5.52	195	SKID	37	50	G 2"	540
	3750	10	10	145	4.96	175	SKID	37	50	G 2"	540
	3250	13	13	189	4.25	150	SKID	37	50	G 2"	540
VSA-60	5100	7	7	102	7.08	250	SKID	45	60	G 2"	590
	4900	8	8	116	6.69	236	SKID	45	60	G 2"	590
	4500	10	10	145	6.09	215	SKID	45	60	G 2"	590
	3900	13	13	189	5.24	185	SKID	45	60	G 2"	590
VSA-75	6100	7	7	102	8.64	305	SKID	56	75	G 3"	725
	5800	8	8	116	8.07	285	SKID	56	75	G 3"	725
	5200	10	10	145	7.65	270	SKID	56	75	G 3"	725
	3900	13	13	189	5.67	200	SKID	56	75	G 3"	725

* Actual Delivery as per Suction Conditions (1 Bar = 14.5 psig)
Technical modifications expected.

Reference Conditions: Absolute inlet pressure 1 Bar (14.5 psi); Intake air temperature 30°C

Above models designed to operate at optimum speed. Above model variants also available for higher cfm range
Tank mounted Air Compressor models can be offered with mounted air dryers also
Air Receiver sizes indicated for each model are standard. All models can be mounted on relative air receiver sizes upon request.
Weights mentioned are near approximate and that of air compressors and accessories mounted on standard air receivers
VYAAN air compressor models can be offered tank mounted, skid mounted, base-plate mounted
VYAAN air compressor models are offered as electric or engine drives
Models not listed in the specification sheet above are typically variants of existing VYAAN models to suit end user requirement

Head Office: 435 Kaliandas Udyog Bhavan | Near Century Bazaar | Prabhadevi | Mumbai - 400025 | Maharashtra
Email: sales@vyaan.co.in | Tel: +91-22-24225958 | 24441177 | Web: www.vyaan.co.in



INDUSTRIAL AIR COMPRESSORS

ROTARY SCREW

Air Cooled | Oil Flooded | Single Stage

3 - 75 hp | 2.2 - 56 kW

VYAAN

| व्यान | : air

HEAD OFFICE: 435, 4th FLOOR KALIANDAS UDYOG BHAVAN
PRABHADEVI | MUMBAI – 400025 | MAHARASHTRA | INDIA
TEL: +91-22-24225958 / 24441177
Email: sales@vyaan.co.in | Web: www.vyaan.co.in



Single Stage, Vertical, High Capacity - LSW Series

VYAAN Model	Compressor Speed	Max. Operating Pressure		Working Pressure		* Actual Delivery		Air Receiver Volume	Rated Motor Power		Air Connection	# Weight of Skid / Bare Unit
		RPM	bar	psig	bar	psig	m ³ /min		cfm	Litres		
VRW-100L	750	8.6	125	7.5	109	3.12	110	500	22	30	G3"	2000
VRW-100NL	750	8.6	125	7.5	109	2.97	105	500	22	30	G3"	2000
VRW-150L	535	8.6	125	7.5	109	4.31	152	1000	30	40	G4"	2500
VRW-150NL	535	8.6	125	7.5	109	4.08	144	1000	37	50	G4"	2500
VRW-200L	514	8.6	125	7.5	109	5.81	205	1500	45	60	G4"	3000
VRW-200NL	514	8.6	125	7.5	109	5.67	200	1500	45	60	G4"	3000
VRW-300L	500	7	102	7	102	8.50	300	2000	56	75	G4"	#1100
VRW-300NL	500	7	102	7	102	8.36	295	2000	56	75	G4"	#1100

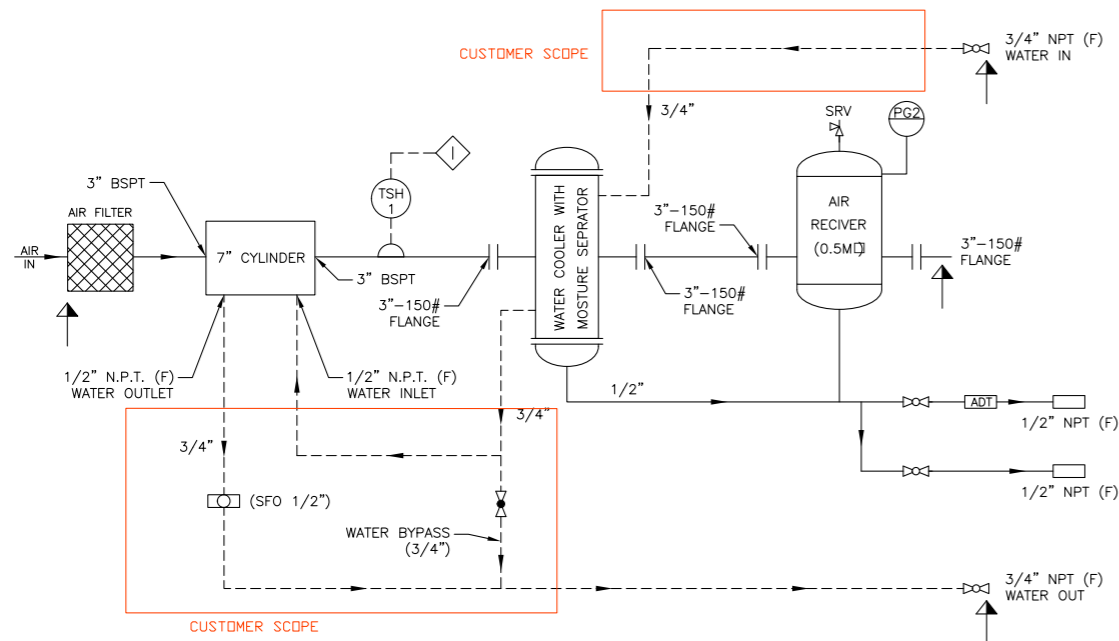
* Actual Delivery as per Suction Conditions (1 Bar = 14.5 psig)

Single Stage, Vertical, High Capacity - HTW Series

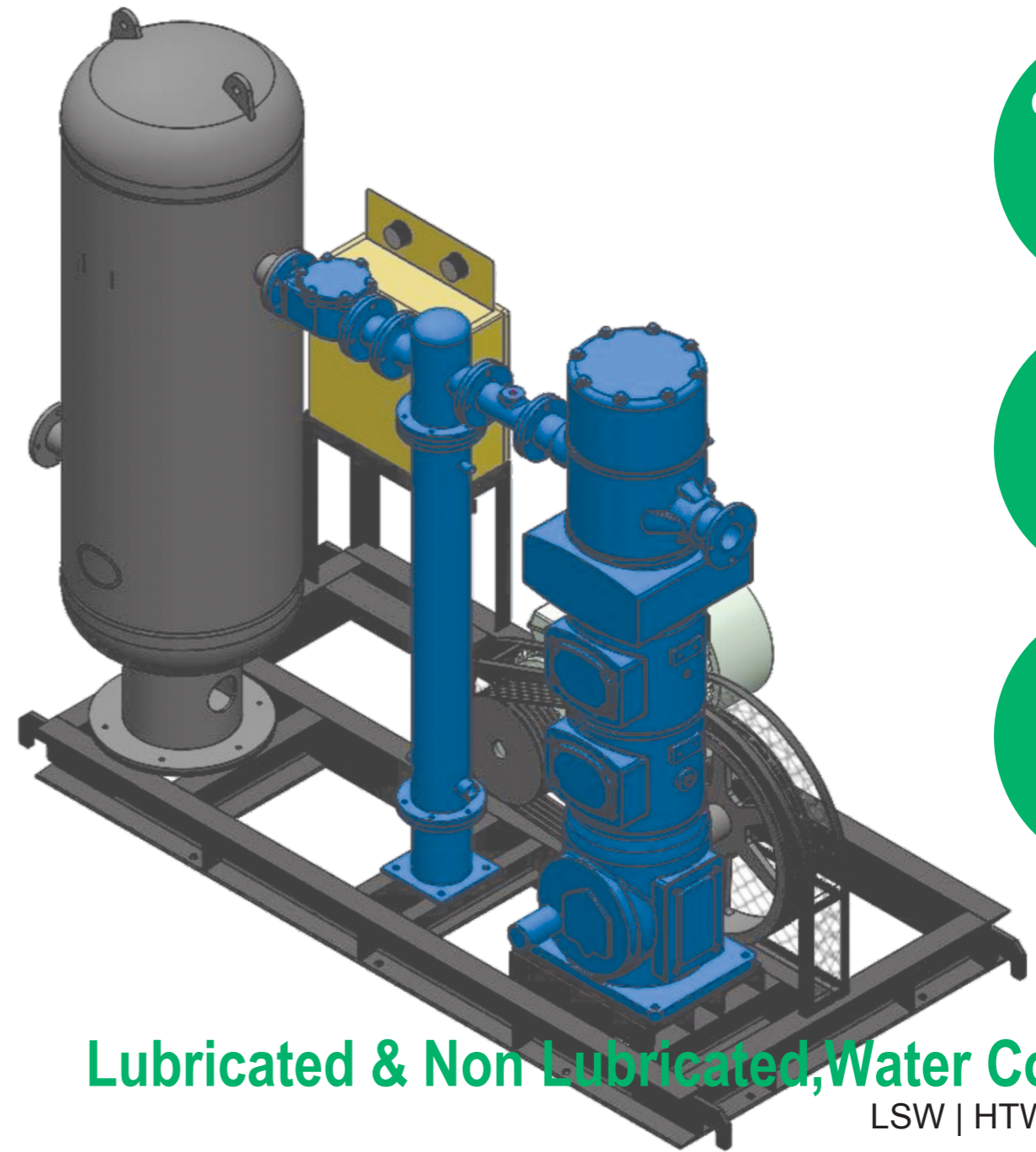
VYAAN Model	Compressor Speed	Max. Operating Pressure		Working Pressure		* Actual Delivery		MOUNTING	Rated Motor Power		Air Connection	# Weight
		RPM	bar	psig	bar	psig	m ³ /min		cfm	kW		
VRW-42-40HNL	500	45	653	42	610	3.12	110	SKID	30	40	G2"	*3000
VRW-42-75HNL	500	45	653	42	610	5.52	195	SKID	56	75	G2"	*3500
VRW-42-120HNL	500	45	653	42	610	9.18	324	SKID	90	120	G2"	*4000

* Actual Delivery as per Suction Conditions (1 Bar = 14.5 psig)

* Approximate weight of the complete skid package # Approximate weight of bare units only
Technical Modifications expected



TYPICAL AIR & WATER SCHEMATIC OF A WATER-COOLED AIR COMPRESSOR UNIT



COMPLETE AIR STATION

100% DUTY CYCLE

ROBUST DESIGN

Lubricated & Non Lubricated, Water Cooled LSW | HTW Series

VYAAN Water-Cooled Reciprocating Air Compressors are LUBRICATED / NON-LUBRICATED type and equipped with a self-contained, force-feed lubrication system for the bearings, running surfaces for the compressor frame and the running gear. The basic method of regulation is done so by inlet valve unloading. Such a system is achieved by using unloaders for each inlet valve. The compressor frame is a rigid, cast iron structure designed to provide suitable mounting for the compressor cylinder, crankshaft and other running gear and to hold all parts in accurate alignment under the stresses and strains involved in operation.

